

# PRODUCT IN LINE

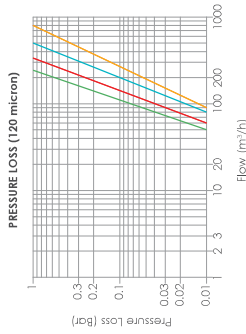
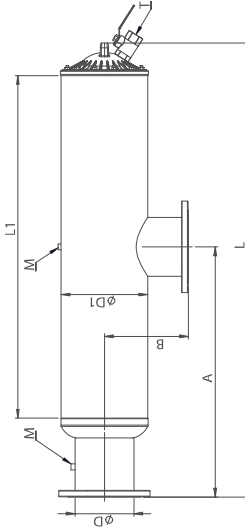
## METAL FILTERS



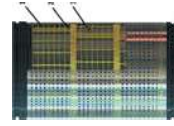
- ANGULAR METAL FILTERS (SCREEN & DISC) FILTERS LE, LD
- HORIZONTAL METAL FILTERS (SCREEN & DISC) FILTERS YE, YD
- METAL HYDROCYCLONE
- METAL SAND MEDIA (GRAVEL) FILTERS
- METAL FERTILIZER TANKS



## Angular Metal Filters



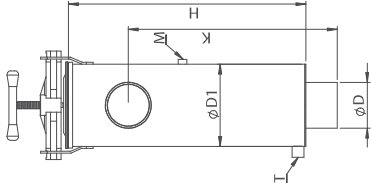
CODE	D	D1	M	T	A	B	L	L1	Main Flow Rate	Filtration Area	Weight	
	inch	inch	inch	inch	mm	mm	mm	mm	m³/h	Usqpm	cm²	kg
LE50	5	10	1/4	1	610	287	1055	640	140	616	3951	46
LE60	6	10	1/4	1	710	287	1255	840	180	792	5268	58
LE60S	6	12	1/4	1	810	287	1455	1040	220	968	6585	68
LE80	8	12	1/4	1	810	287	1455	1040	280	1232	6585	70
LE80S	8	12	1/4	1	930	312	1690	1275	340	1496	7902	88



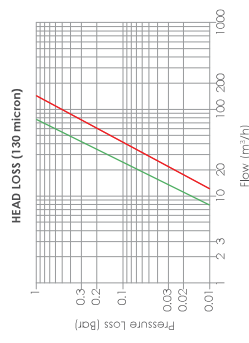
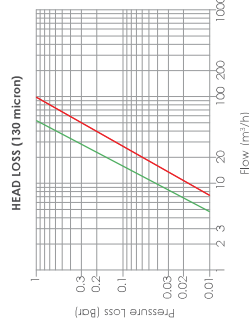
### SCREEN LE

**GENERAL CHARACTERISTICS**  
 Body Material: S195T  
 Cartridge Material: PP (Screen SS 304 Cage PA)  
 Maximum Working Pressure: 10 Bar (116 PSI)  
 Maximum Working Temperature: 60 °C / 140 °F  
 Filtration Degree: 20-50-100-130 Micron  
 Filter Cartridge: E: Screen Cartridge  
 Painting Method: Electrostatic Powder Coating  
 Paint Material: Epoxy Polyester

## Angular Metal Filters



CODE	D	D1	M	T	K	H	Flow Rate	Weight
	inch	inch	inch	inch	mm	mm	m³/h	Usqpm
LD520	2	6	1/4	1/4	320	400	30	132
LD525	2 1/2	8	1/4	3/4	320	400	35	154
LD530	3	8	1/4	3/4	455	515	50	220
LD40	4	8	1/4	3/4	555	625	70	308



DISC

LD525 — LD40

LD520 — LD530

### DISC LD

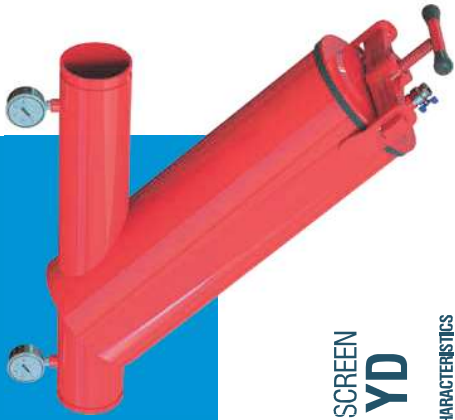
**GENERAL CHARACTERISTICS**  
 Body Material: S195T  
 Cartridge Material: PP (Disc)  
 Maximum Working Pressure: 8 Bar (116 PSI)  
 Maximum Working Temperature: 60 °C / 140 °F  
 Filtration Degree: 20-50-100-130 Micron  
 Filter Cartridge: D: Disc Cartridge  
 Painting Method: Electrostatic Powder Coating  
 Paint Material: Epoxy Polyester

### SCREEN LE

### GENERAL CHARACTERISTICS

Body Material: S195T  
 Cartridge Material: PP (Screen SS 304 Cage PA)  
 Maximum Working Pressure: 10 Bar (116 PSI)  
 Maximum Working Temperature: 60 °C / 140 °F  
 Filtration Degree: 20-50-100-130 Micron  
 Filter Cartridge: E: Screen Cartridge  
 Painting Method: Electrostatic Powder Coating  
 Paint Material: Epoxy Polyester

## Horizontal Metal Filters

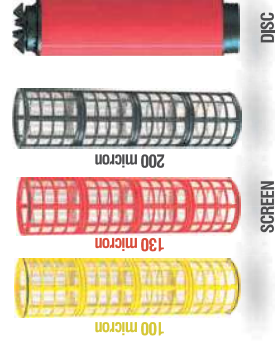
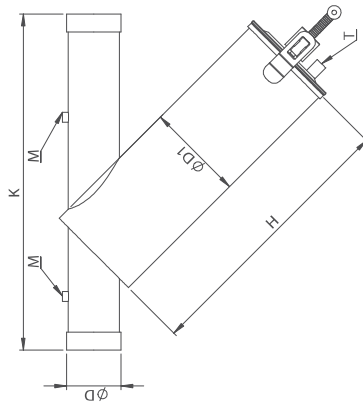
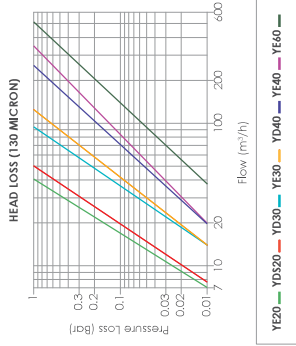


### DISC & SCREEN YE, YD

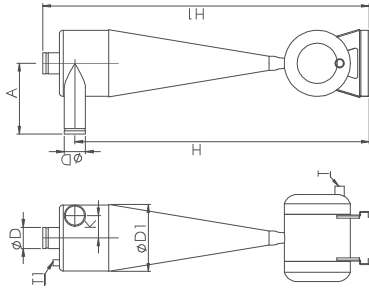
#### GENERAL CHARACTERISTICS

Body Material: S195T  
Cartridge Material: PP (Disc) PA (Screen SS 304 Cage PA)  
Maximum Working Pressure: 8 Bar (116 PSI)  
Maximum Working Temperature: 60°C / 140°F  
Filtration Degree: 20-50-100-130 Micron  
Filter Cartridge: D: Disc Cartridge E: Screen Cartridge  
Painting Method: Electrostatic Powder Coating  
Paint Material: Epoxy Polyester

CODE	D	DT	M	T	K	H	FLOW RATE	WEIGHT
YE20	2	6	¼	¼	515	240	30	132
YE25	2½	6	¼	¼	570	360	35	154
YE30	3	6	¼	¼	570	480	45	198
YE40	4	8	¼	½	670	605	75	330
YE50	5	10	¼	1	900	700	140	616
YE60	6	10	¼	1	1100	1000	180	792
YE80	8	12	¼	1	1200	1200	280	1232
YD20	2	6	¼	¼	520	400	30	132
YD25	2½	6	¼	¾	580	400	35	154
YD30	3	8	¼	¾	580	515	45	198
YD40	4	8	¼	¾	670	625	70	308



## Metal Hydrocyclone



**GENERAL CHARACTERISTICS**  
Body Material: S235JR  
Maximum Working Pressure: 8 Bar (116 PSI)  
Maximum Working Temperature: 60°C / 140°F  
Painting Method: Electrostatic Powder Coating  
Paint Material: Epoxy Polyester

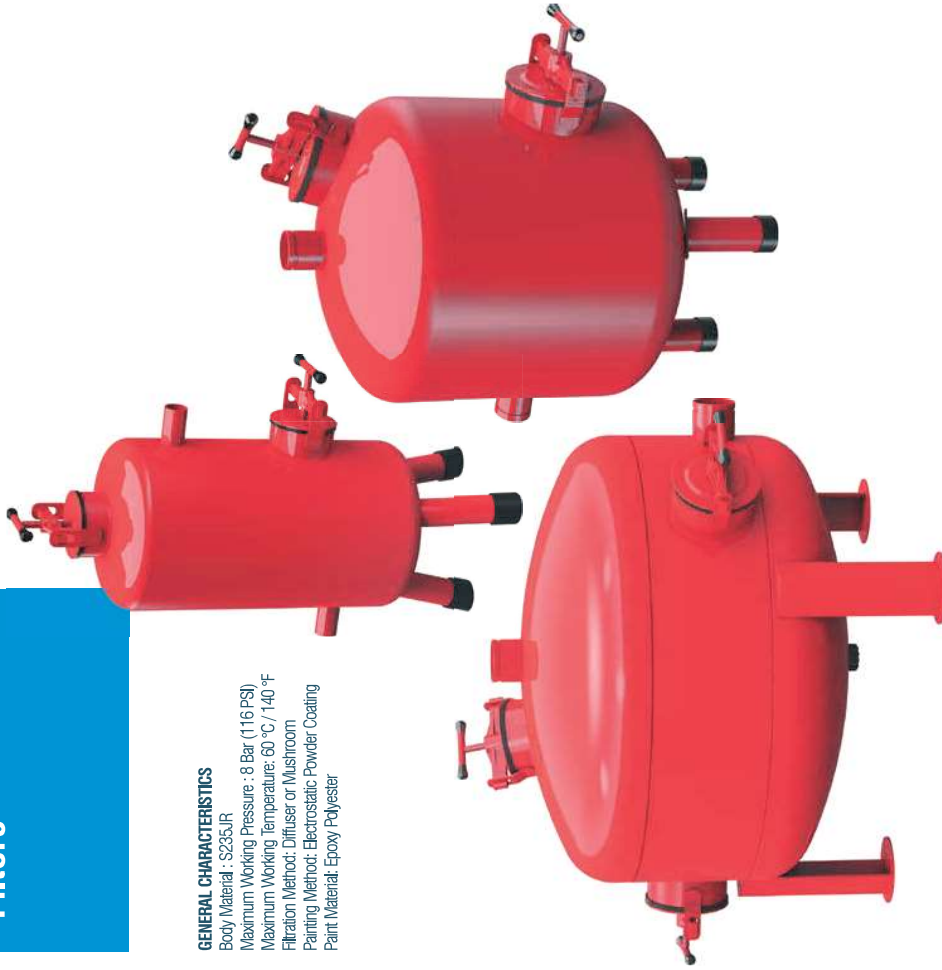
CODE	D	DT	T	T1	K	A		H		H1		FLOW		MAX. PRESSURE		WEIGHT		
						mm	inch	mm	inch	mm	inch	m <sup>3</sup> /h	Us gpm	Bar	PSI	kg	lb	
2020	2	11	¾	½	110	4,3	250	9,8	1185	46,7	1305	51,4	20	88	8	116	25	55,1
2025	2½	11	1	½	102	4	300	11,8	1255	49,4	1385	54,5	30	132	8	116	27	59,5
2030	3	11	1	½	95	3,7	300	11,8	1250	49,2	1385	54,5	40	176	8	116	28	61,7
2040	4	11	1	½	82,5	3,2	300	11,8	1235	48,6	1385	54,5	60	264	8	116	30	66,1
2040S	4	13	2	¾	102,5	4	350	13,8	1280	50,4	1430	56,3	80	352	8	116	35	77,2
2050	5	15	2	1	120	4,7	400	15,7	1520	59,8	1745	68,7	120-140	528-616	8	116	65	143,3
2060	6	18	2	1	142,5	5,6	450	17,7	1750	68,9	2035	80,1	160-200	704-880	8	116	92	202,8



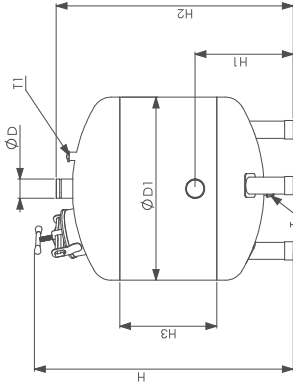
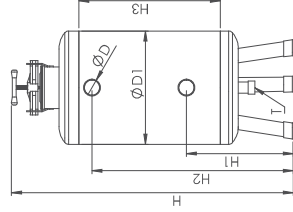
## Metal Sand Media (Gravel) Filters

### GENERAL CHARACTERISTICS

Body Material: S235JR  
Maximum Working Pressure: 8 Bar (116 PSI)  
Maximum Working Temperature: 60 °C / 140 °F  
Filtration Method: Diffuser or Mushroom  
Painting Method: Electrostatic Powder Coating  
Paint Material: Epoxy Polyester

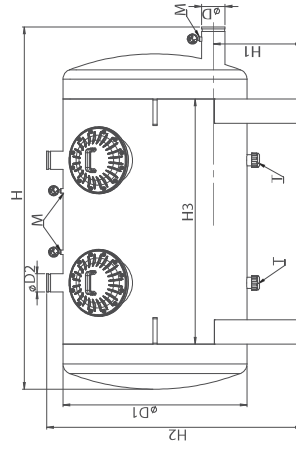
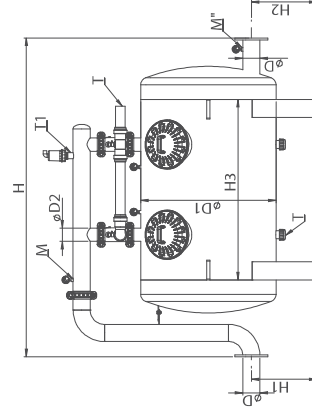


CODE	D	D1	T	T1	H	H1	H2	H3	FLOW		MAX. PRESSURE	SAND CAPACITY		WEIGHT						
									m <sup>3</sup> /h	Us gpm		kg	lb	kg	lb					
3020	2	18	3/4	-	1250	49,2	400	15,7	900	35,4	700	27,6	15	66	8	116	150	330,7	52	114,6
3025	2 1/2	24	2	-	1450	57,1	560	22	1060	41,7	750	29,5	20	88	8	116	300	661,4	77	169,8
3030	3	24	2	-	1450	57,1	560	22	1060	41,7	750	29,5	24	105,6	8	116	300	661,4	82	180,8
3040	4	24	2	-	1700	66,9	560	22	1260	49,6	1000	39,4	28	123,2	8	116	350	771,6	94	207,2
3050	3	32	2	1	1195	47	420	16,5	1100	43,3	540	21,3	45	198	8	116	350	661,4	115	253,5
3060	3	36	2	1	1195	47	420	16,5	1100	43,3	500	19,7	50	220	8	116	350	661,4	132	291
3070	4	36	2	1	1195	47	420	16,5	1100	43,3	500	19,7	55	242	8	116	350	661,4	140	308,6
3080	4	48	2	1	1185	46,7	520	20,5	1100	43,3	300	11,8	80	352	8	116	400	881,8	250	551,2

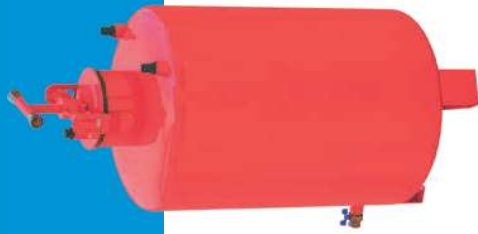


## SAND MEDIA Filters 3090 GRAVEL TANK

CODE	D	D1	D2	M	T	T1	H	H1	H2	H3	FLOW		MAX. PRESSURE	SAND CAPACITY		WEIGHT						
											m <sup>3</sup> /h	Us gpm		Bar	PSI	kg	lb	kg	lb			
3090	4	36	3	1/4	2	-	1800	70,9	410	16,1	1260	49,2	1200	48	70-90	308-396	8	116	800	1763,7	285	628,3
3090B	4	36	3	1/4	2	1	2120	83,5	410	16,1	1200	48	70-90	308-396	8	116	800	1763,7	320	705,5		
3090S	4	36	3	1/4	2	1	2780	109,4	410	16,1	1200	48	70-90	308-396	8	116	800	1763,7	340	749,6		
3090SM	4	36	3	1/4	2	1	3000	118,1	410	16,1	1200	48	70-90	308-396	8	116	800	1763,7	360	793,7		

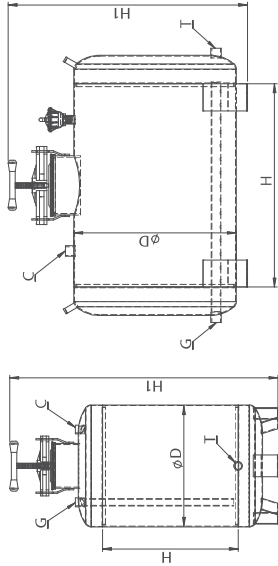


## Metal Fertilizer Tanks



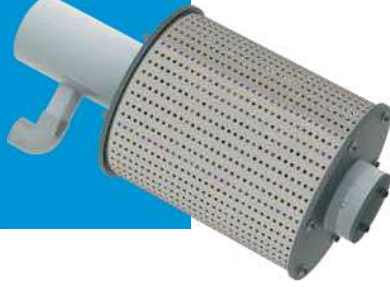
### GENERAL CHARACTERISTICS

Body Material: S235JR  
Maximum Working Pressure: 8 Bar (116 PSI)  
Maximum Working Temperature: 60 °C / 140 °F  
Painting Method: Electrostatic Powder Coating  
Paint Material: Epoxy Polyester

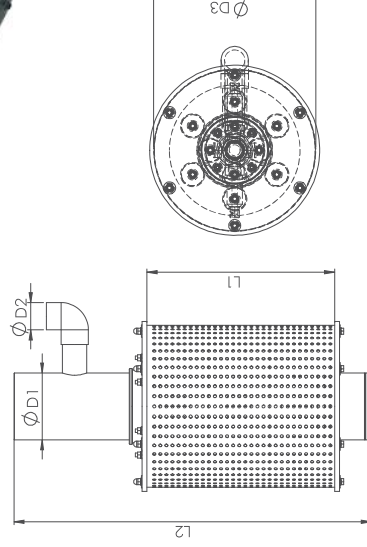


CODE	D	G	C	T	H	H1	CAPACITY	WEIGHT
	inch	inch	inch	inch	mm	mm	lit	kg
1060V	15	1/2	1/2	1/2	330	790	60	20
1100V	18	3/4	3/4	3/4	500	960	100	30
1200V	24	1	1	1	600	1060	200	56
1100H	18	3/4	3/4	3/4	500	740	100	33
1200H	24	1	1	1	600	860	200	59
1300H	24	1	1	1	750	860	300	66
1350H	24	1	1	1	1000	860	350	82
1500H	24	1	1	1	1500	860	500	108

## Self Cleaning Strainers (Double Suction Filters)



**GENERAL CHARACTERISTICS**  
Minimum Required Back Flush Pressure: 3 Bar (44 PSI)  
Screen Filtration Degree: 2,4 mm  
Screen Material: SS304L  
Accessories For 6" Outlet: 8" To 6" Reducer  
Connections Fittings: Provided



CODE	D1	D2	D3	L1	L2	L3	M
	Outlet (inch)	Drain (inch)	Cylinder (inch)	Length (inch)	Overall Length (inch)	Main Flow Rate (m3/h)	Mass (kg)
DSF4	4	1	10,5	12	23,2	91	6,3
DSF8	8	2	20	22	42,9	330	22,8